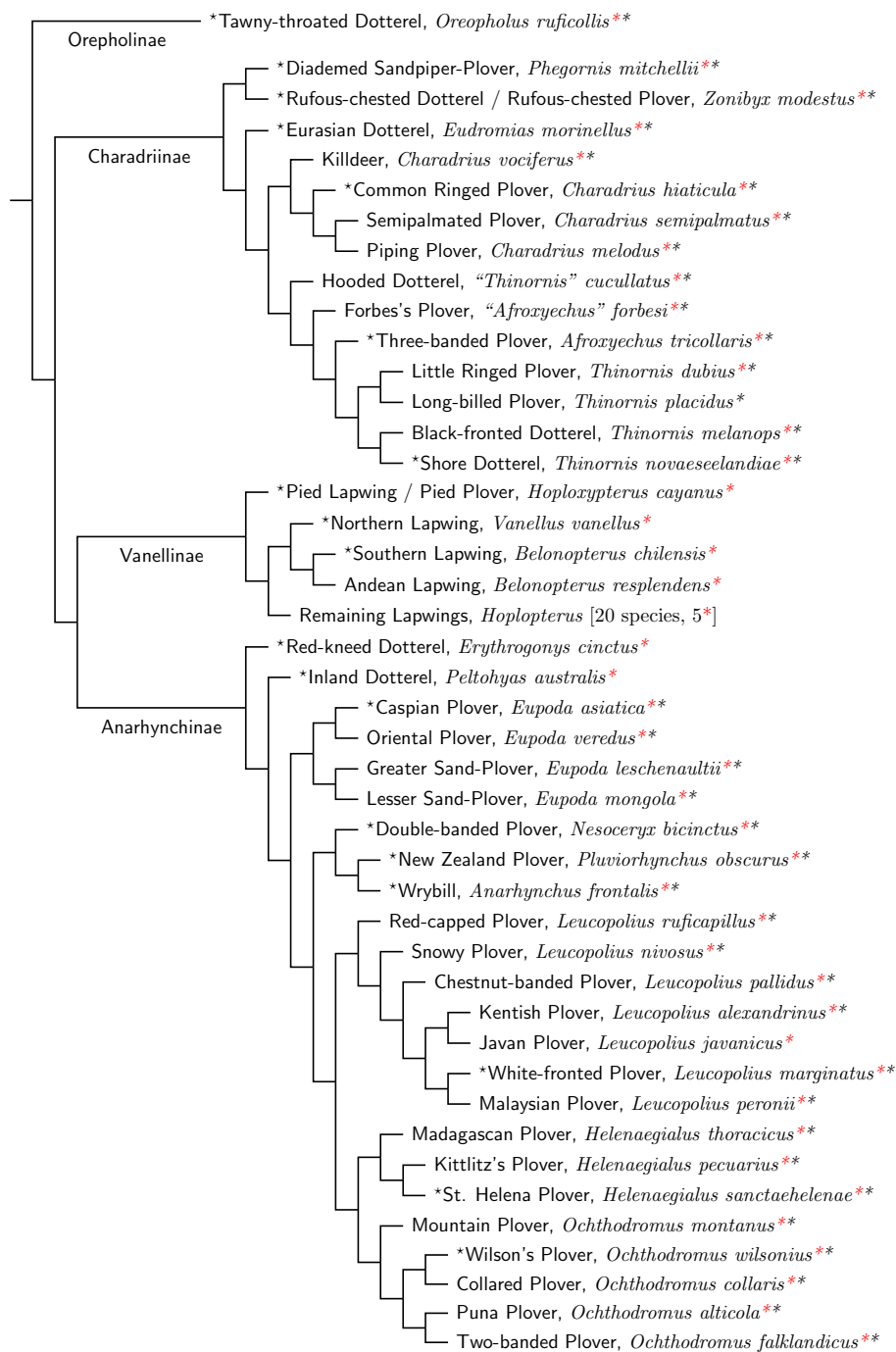


Charadriidae: Plovers, Dotterels



Sources: Barth et al. (2013), Černý and Natale (2021), Dos Remedios et al. (2015).

KEY:

Prefixes:

* = Type Species

Suffixes:

* = DNA used by Černý and Natale (2021).

* = DNA from Barth et al. (2013) and/or dos Remedios et al. (2015).