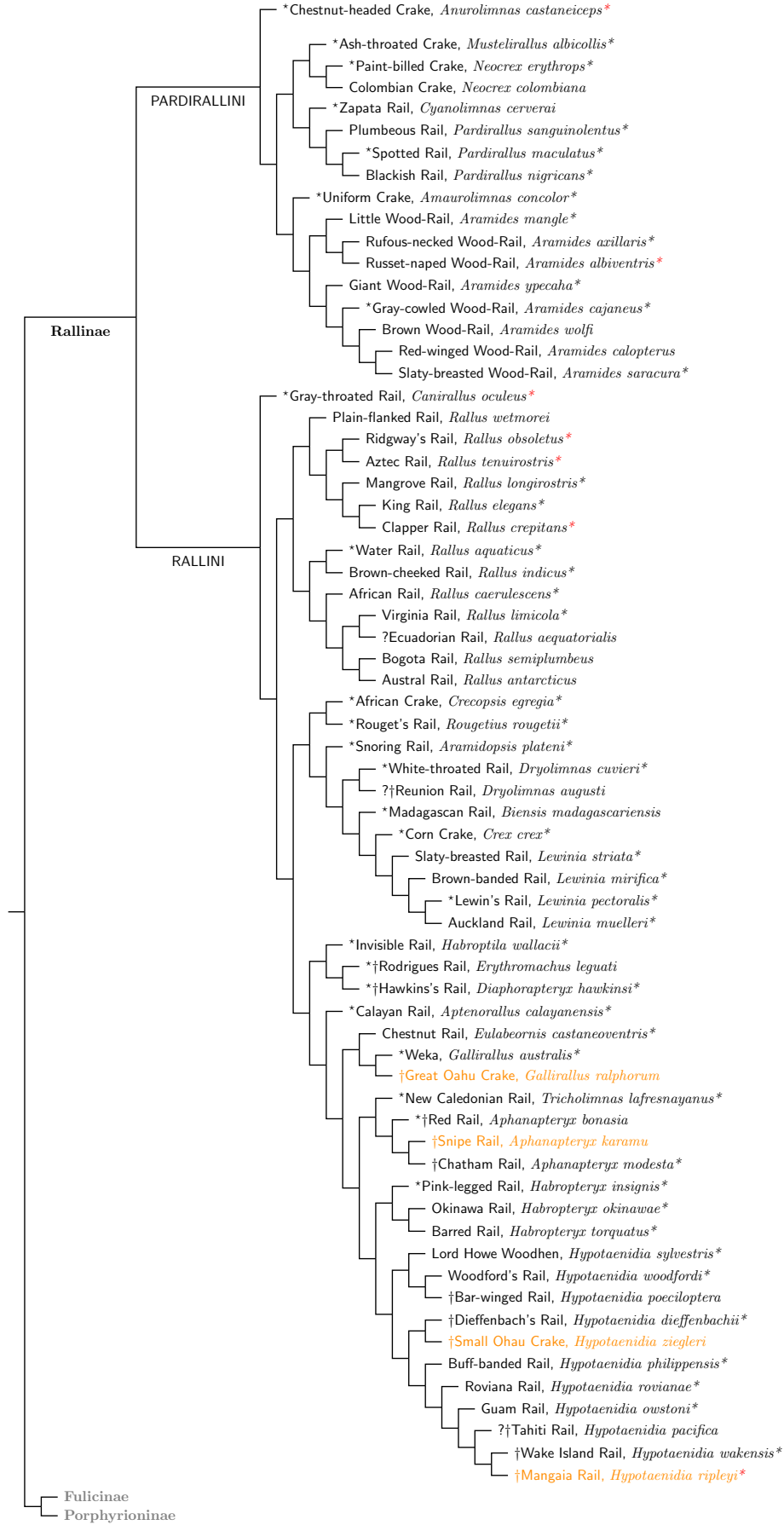
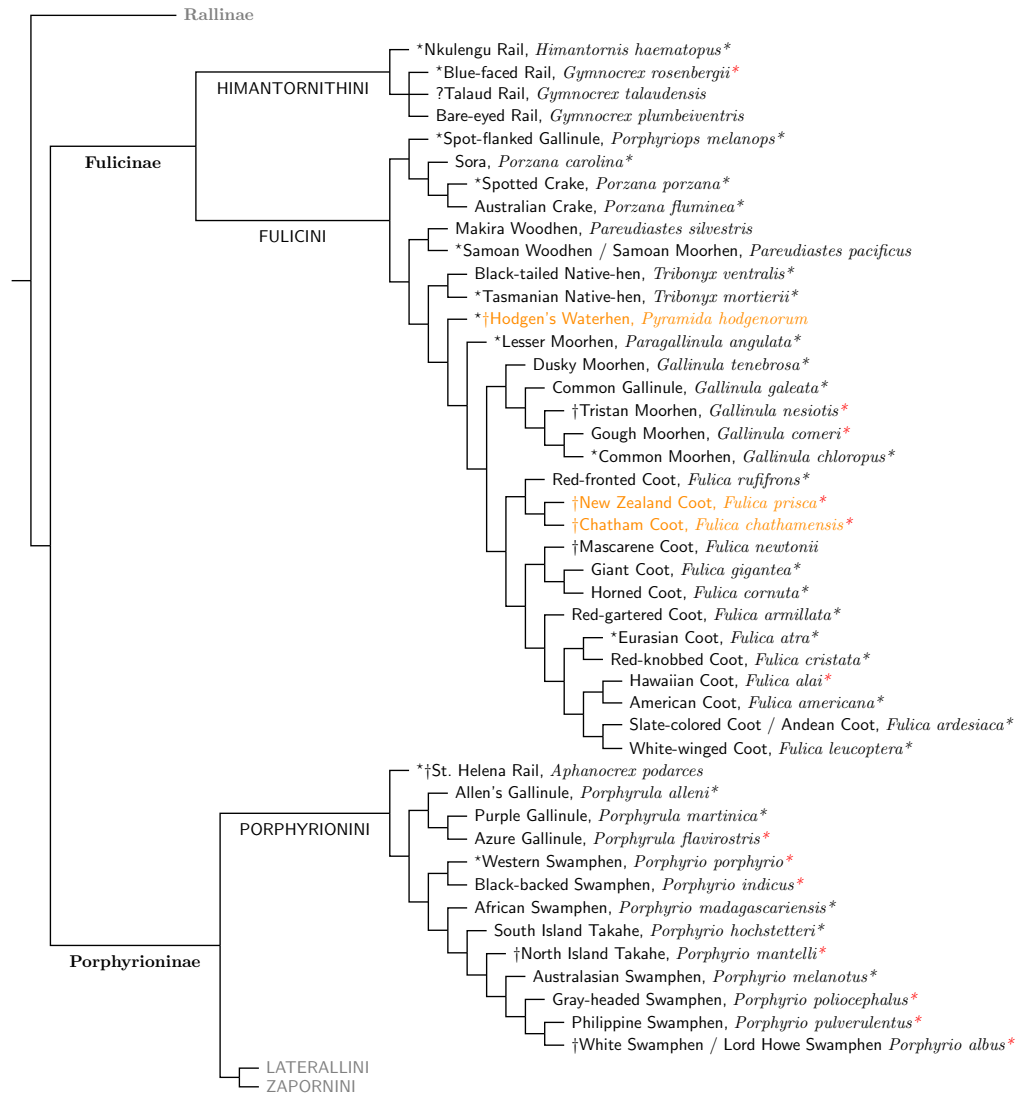


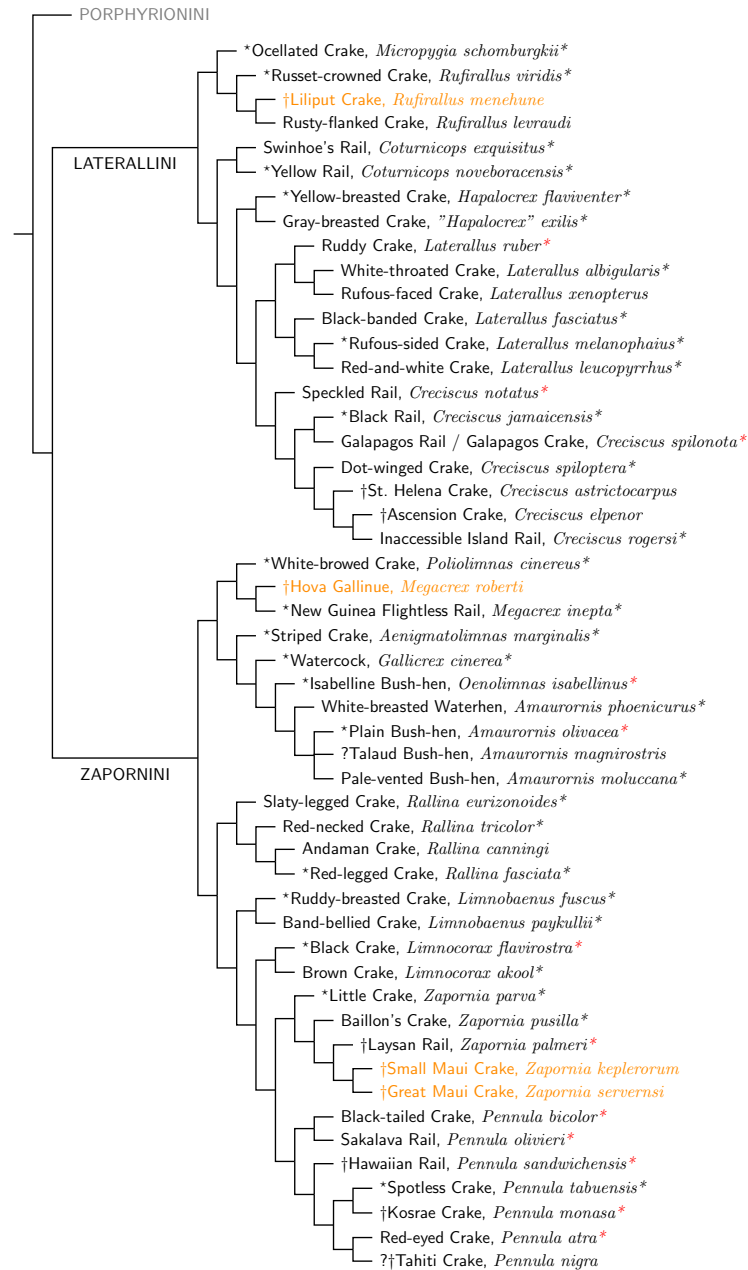
Rallidae: Rallinae



# Rallidae: Fulicinae



## Rallidae: Porphyriioninae



### KEY:

#### Prefixes:

\* = Type Species

† = Extinct

? = Not in García-R and Matzke (2021) + No DNA

#### Suffixes:

\* = DNA used by García-R. and Matzke (2021)

\* = DNA only from other papers

#### Color:

Orange = Species not on TiF list.

Sources: Boast et al. (2019), Chaves et al. (2020), García-R. and Matzke (2021), García-R. and Trewick (2015), García-R et al. (2020), Groenewald et al. (2008), Kirchman (2012), Kirchman et al. (2021), Livezey (1998), Maley and Brumfield (2013), Marcondes and Silveira (2015), Sangster et al. (2015), Slikas et al. (2002), Strevander et al. (2019), Trewick (1997).