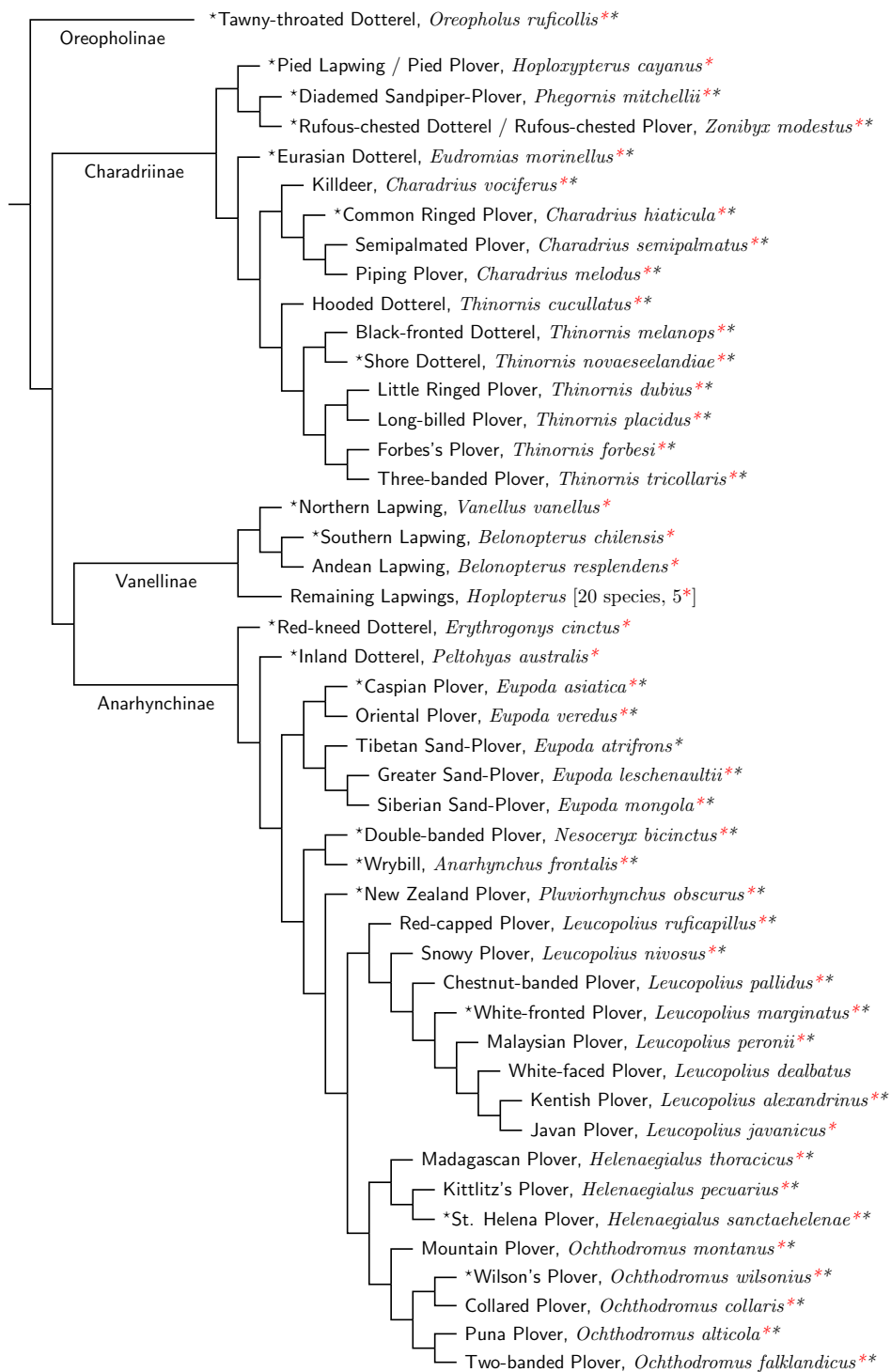


Charadriidae: Plovers, Dotterels, & Lapwings



Sources: Barth et al. (2013), Černý and Natale (2022), Dos Remedios et al. (2015), Dufour et al. (2024), Küpper et al. (2009), Rheindt et al. (2011b), Sadanandan et al. (2019), Wang et al. (2019), and Wei et al. (2022).

KEY:

Prefixes:

* = Type Species

Suffixes:

* = DNA used by Černý and Natale (2022)

* = includes DNA from Barth et al. (2013), dos Remedios et al. (2015), and Wei et al. (2022)